

**Where traditions
*live on.***



The Sonoma

2,892 Sq.Ft. | 4 Bedrooms | 3 Baths | 3-Car Garage

SONOMA

The Story Keeper

The Sonoma was designed for generations to gather, grow, and create the moments that become a family's tradition. Thoughtfully designed with flexible living spaces and adaptable room configurations, the Sonoma can expand to up to six bedrooms.

With the option to convert the family room into a second primary suite, Sonoma creates a rare opportunity for true multi-generational living under one roof.

❖ **Optional Private Suite**

Convert the family room into a private suite designed for multi-generational living.

❖ **Family Room with Optional Wet Bar**

A relaxed secondary living space ideal for entertaining or movie nights.

❖ **Formal Dining & Casual Breakfast Nook**

Dedicated dining spaces for both everyday meals and memorable gatherings.

❖ **Flexible Living Spaces**

Convert the dining room into another bedroom or the breakfast nook into a work room.



LIVING ROOM W/ FIREPLACE & CABINET OPT

HIGHLIGHTS

- 2,892 - 3,031 Sq.Ft.
- 4 - 6 Bedrooms
- 3 - 4 Baths
- 3-Car Garage

AVAILABLE ELEVATIONS



FARMHOUSE

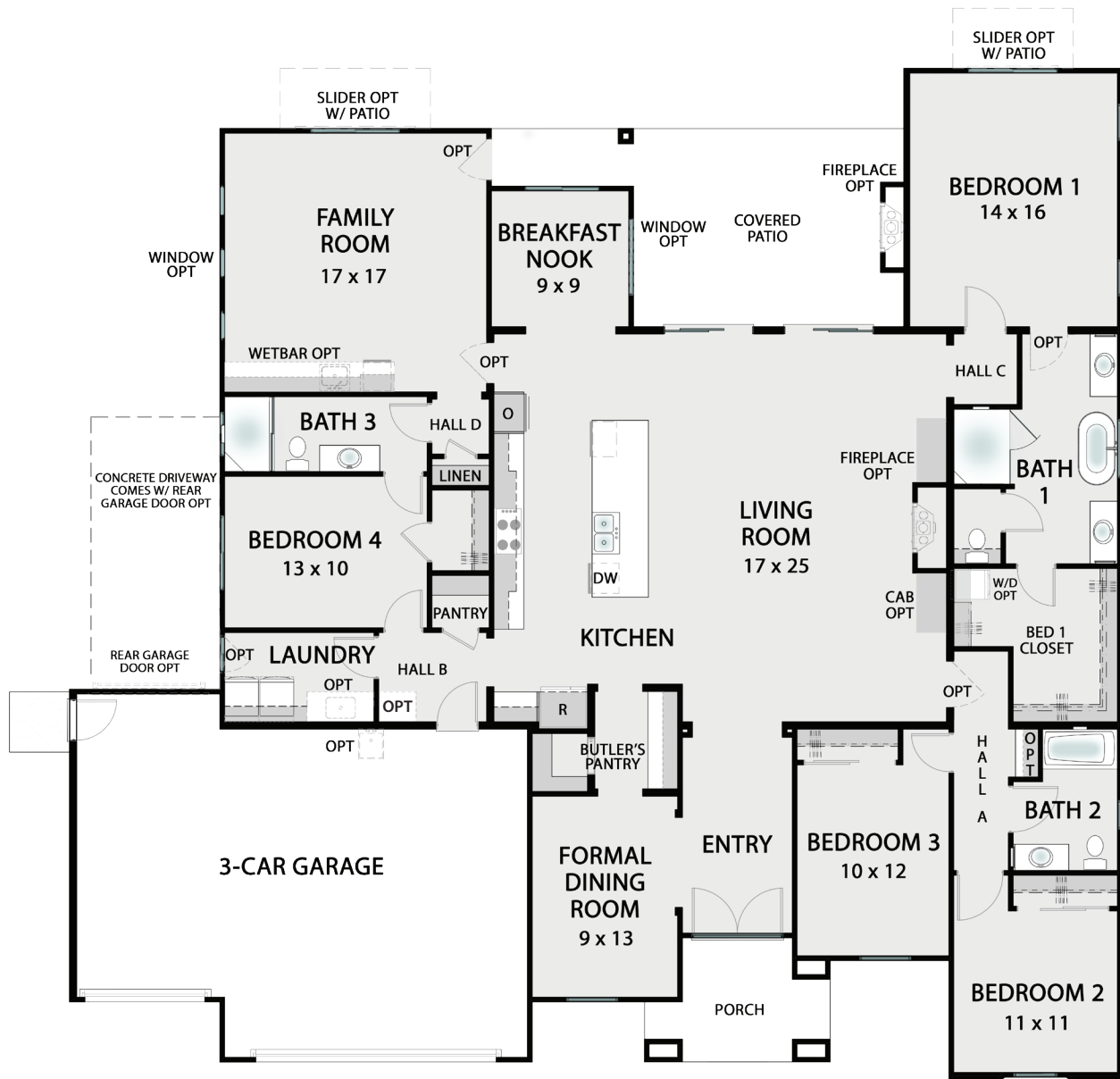


SPANISH



CONTEMPORARY

SONOMA FLOORPLAN

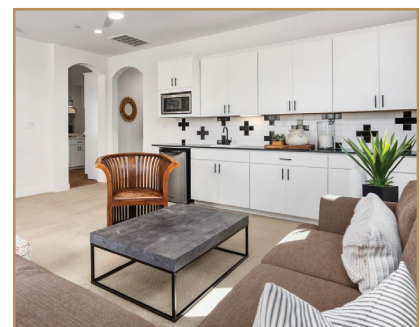


Flexible Spaces

With adaptable rooms and layout options, Sonoma can expand to up to 6 bedrooms, creating space for growing families.



KITCHEN



FAMILY ROOM W/ WETBAR

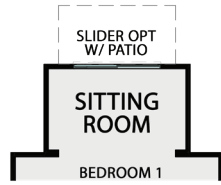
2,892 SQ.FT. | 4 BEDROOMS | 3 BATHS | 3-CAR GARAGE

Designed for Generations

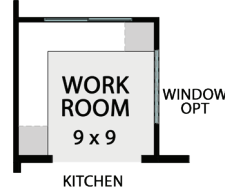
Customize Your Sonoma



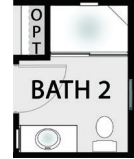
OFFICE OPT
IN LIEU OF
BEDROOM 3



SITTING ROOM OPT
IN BEDROOM 1
[+60 SQ.FT.]



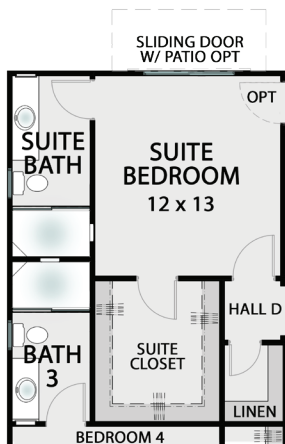
WORK ROOM OPT
IN LIEU OF
BREAKFAST NOOK



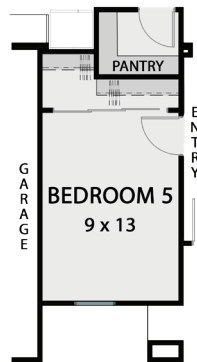
SHOWER OPT
IN BATH 2



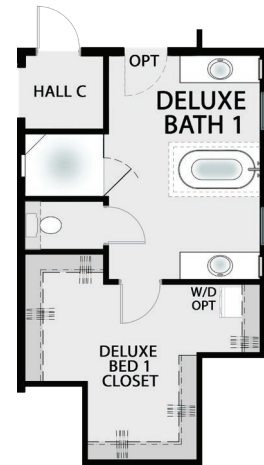
POCKET PATIO DOOR OPT
AT FAMILY ROOM



SUITE BEDROOM OPT
IN LIEU OF FAMILY ROOM



BEDROOM 5 OPT
IN LIEU OF FORMAL
DINING ROOM AND
BUTLER'S PANTRY



DELUXE BATH 1
[+79 SQ.FT.]

Popular Options



SITTING ROOM OPTION

Virtual Walkthrough

