

**Where everyone
*comes together.***



The Tacoma

3,064 Sq.Ft. | 4 Bedrooms | 3 Baths | 3-Car Garage

TACOMA

The Family Estate

The Tacoma is the largest and most luxurious home in the Vista Montaire collection. Designed to capture the surrounding hilltop views, expansive living spaces and outdoor entertaining areas make the most of the community's elevated setting.

With the widest range of customization options including a pool bath, wet bar, and additional living spaces, the Tacoma offers a home that truly reflects everything you've worked for.

❖ **Designed for the Views**

Living spaces and outdoor patios positioned to capture sweeping hilltop vistas.

❖ **Entertainer's Kitchen & Wet Bar**

A chef-inspired kitchen and optional wet bar create the perfect setting for hosting.

❖ **Expansive Indoor-Outdoor Living**

Patios and gathering spaces extend the home outdoors for entertaining and relaxation.

❖ **Ultimate Flexibility**

Options for a fifth bedroom, bonus room, or work room allow the home to adapt to your lifestyle.



HIGHLIGHTS

- 3,064 - 3,395 Sq.Ft.
- 3 - 5 Bedrooms
- 3 - 5 Baths
- 3-Car Garage

AVAILABLE ELEVATIONS



FARMHOUSE

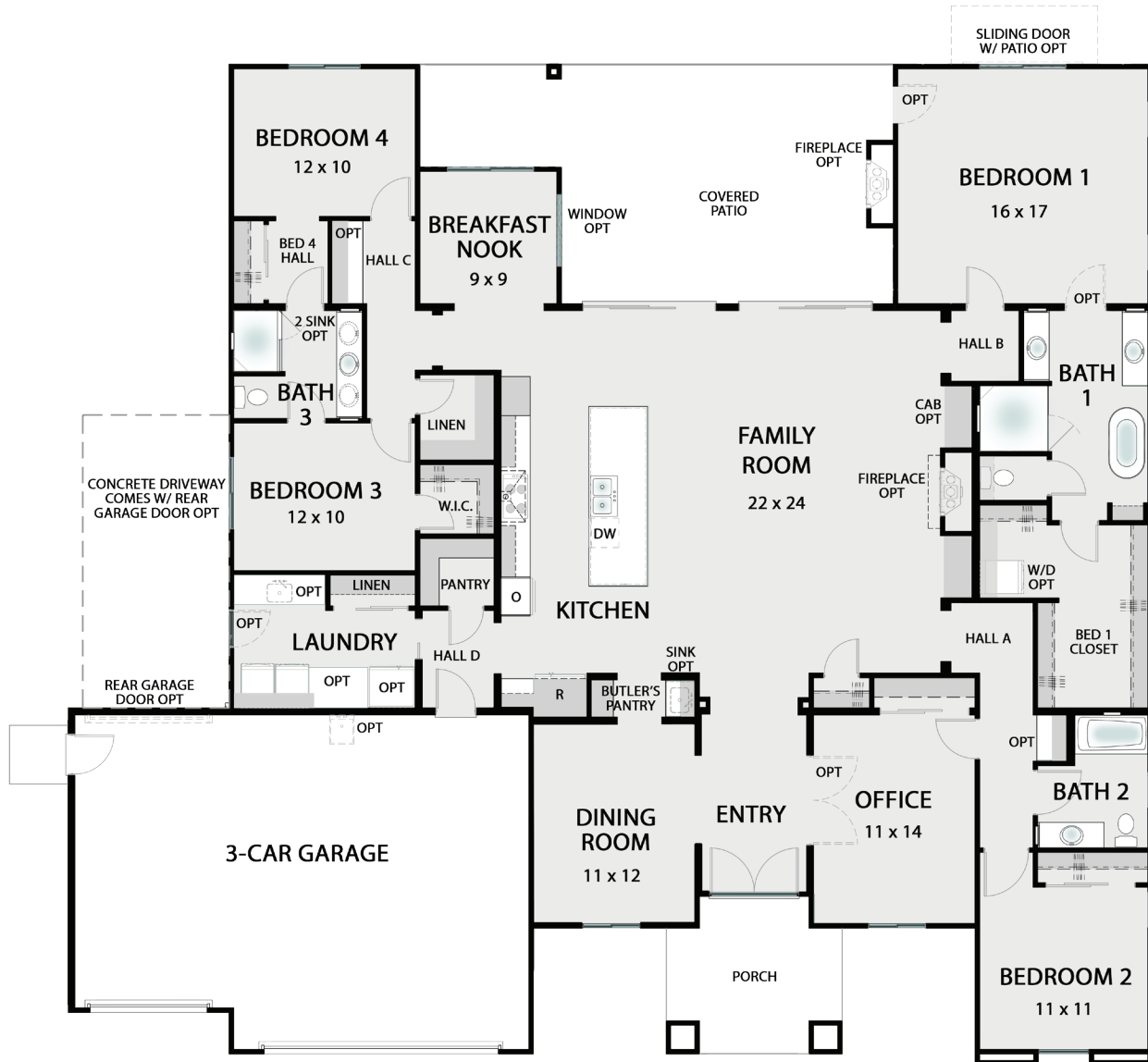


SPANISH



CONTEMPORARY

TACOMA FLOORPLAN



OPEN-AIR LIVING

Expansive gathering spaces connect effortlessly to outdoor living areas designed for relaxed entertaining.



KITCHEN



BEDROOM 1

3,064 SQ.FT. | 4 BEDROOMS | 3 BATHS | 3-CAR GARAGE

Designed for Luxury

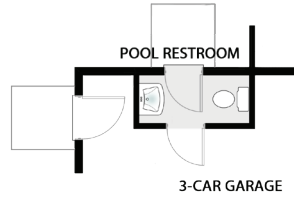
Customize Your Tacoma



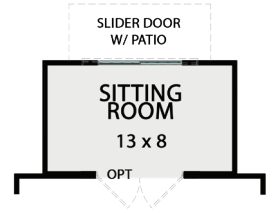
BEDROOM 5 OPT
IN LIEU OF
OFFICE



OFFICE OPT
IN LIEU OF
DINING ROOM



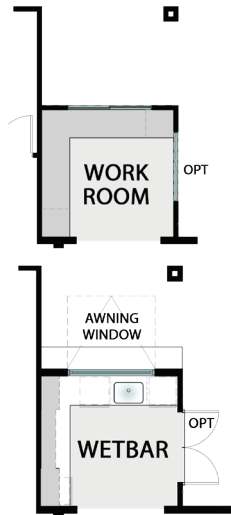
**POOL
RESTROOM OPT**
[+29 SQ.FT.]



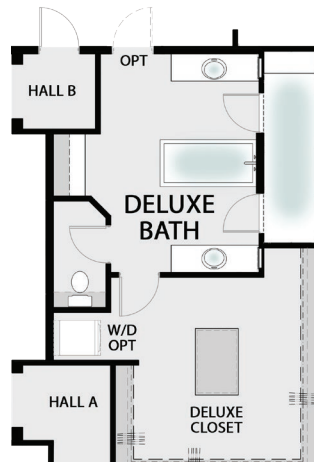
SITTING ROOM OPT
IN BEDROOM 1
[+109 SQ.FT.]



BONUS ROOM OPT
IN LIEU OF BED 4 &
BREAKFAST NOOK
[+68 SQ.FT.]



**WORK ROOM OR
WETBAR OPT**
IN LIEU OF
BREAKFAST NOOK



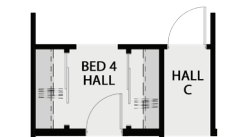
DELUXE BATH OPT
[+154 SQ.FT.]



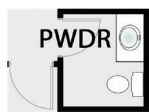
**POCKET PATIO
DOOR OPT**
IN FAMILY ROOM



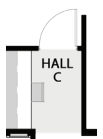
SHOWER OPT
IN BATH 2



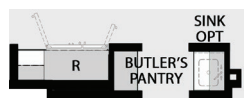
CLOSET OPT
AT BEDROOM 4



POWDER OPT
IN LIEU OF LINEN



DESK OPT
AT HALL C



**42" REFRIGERATOR
OPT**

Virtual Walkthrough

